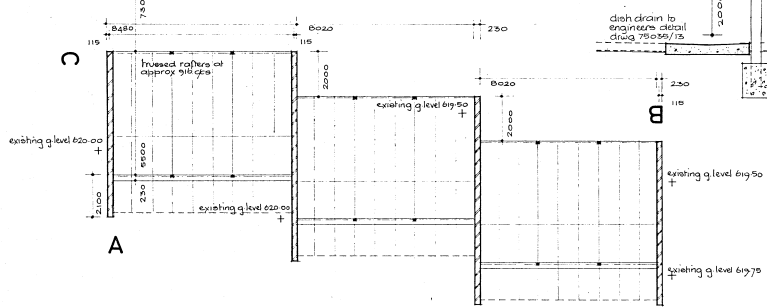
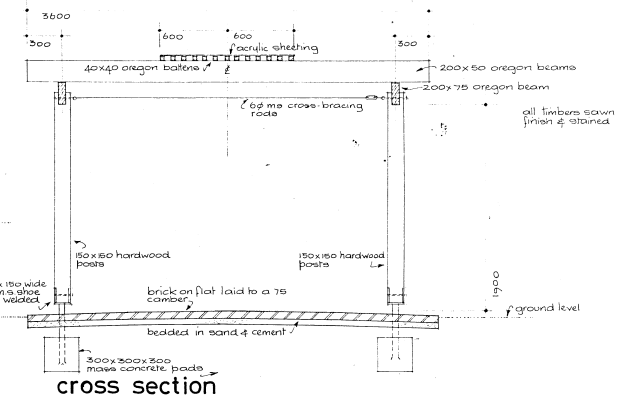
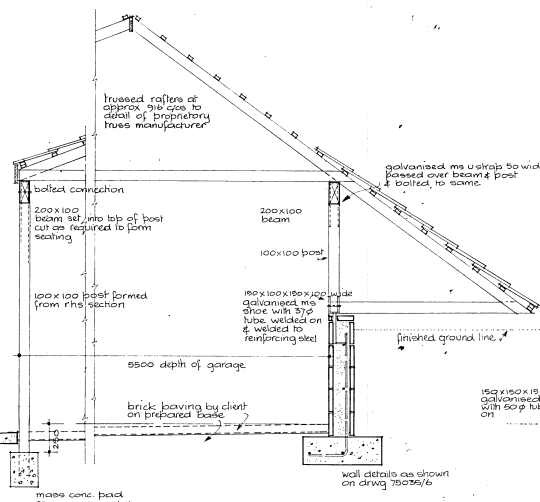


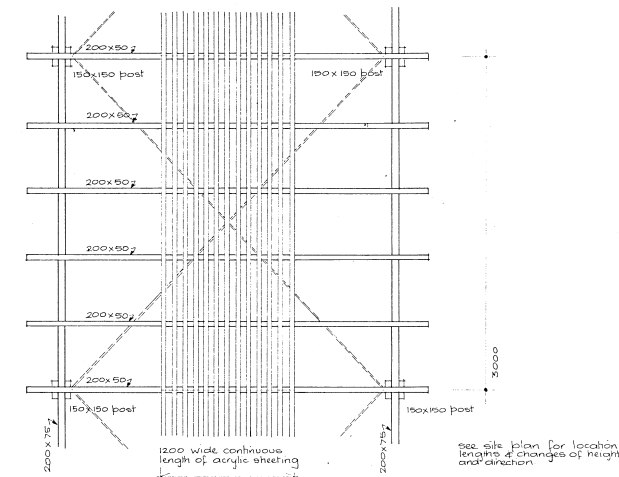
carpark P5



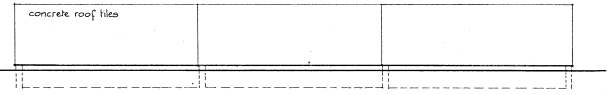
cross section through garage



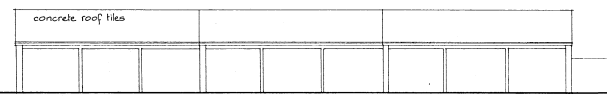
cross section



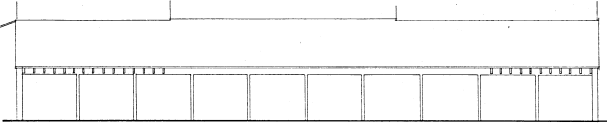
part plan of PERGOLA



Elevation A P5



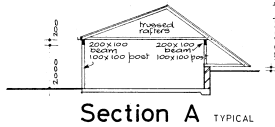
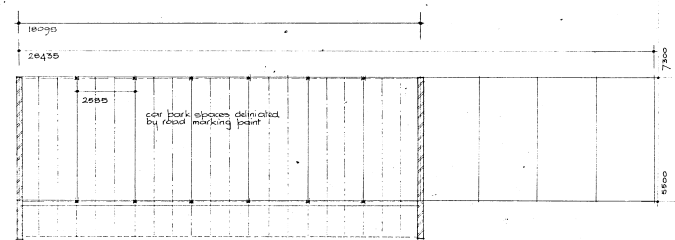
Elevation B P5



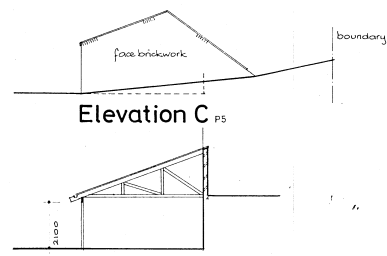
West Elevation P1



carpark P1



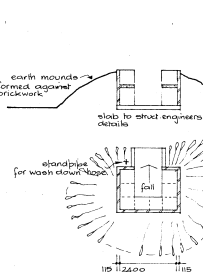
Section A TYPICAL



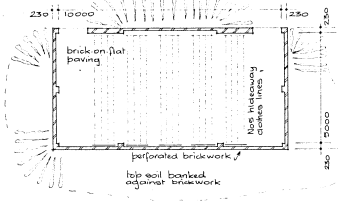
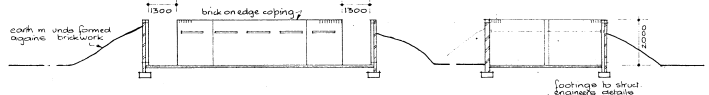
Elevation C P1



Section D P1



BIN AREA (B1 - B5)



DRYING AREA (D1 - D4)

C Garage added to P5 10.12.77
 6 Garages added P14 P5 20.11.73
 A Cross Section through typical garage section 5.7.78

ARCHITECTS
 MICHAEL DYSART + ASSOC PTY LTD
 15 GEORGE STREET SYDNEY CODE SYDNEY 2000
 PHONE 433 2597

STRUCTURAL, CIVIL, HYDRAULIC ENGINEER
 TAYLOR THOMSON + WHITTING
 48 CHANCERY STREET ST LEONARDS 2255
 PHONE 433 7358

ELECTRICAL ENGINEER
 BARRY WEBB + ASSOCIATES
 25 ALEXANDER STREET HARTERS HILL 2107
 PHONE 855 2738

URAMEI
 COOPERATIVE COMMUNITY
 ADVANCEMENT SOCIETY LTD
 GROUP COMPANY KANSAS (SEC 193) A.C.T.

**GARAGE and
 CARPARKS P5
 and part P1
 PERGOLA, BIN &
 DRYING AREAS**

SCALE 1:100 & 1:50 D.S.M.
 DATE April 1977
 DRAWN P.S.G.

