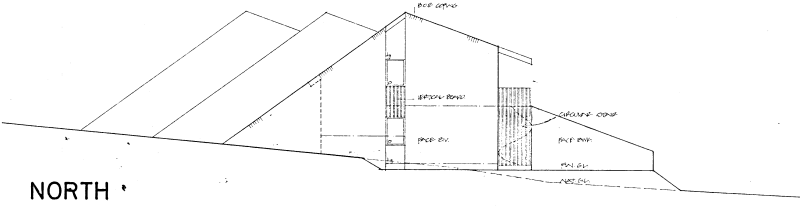


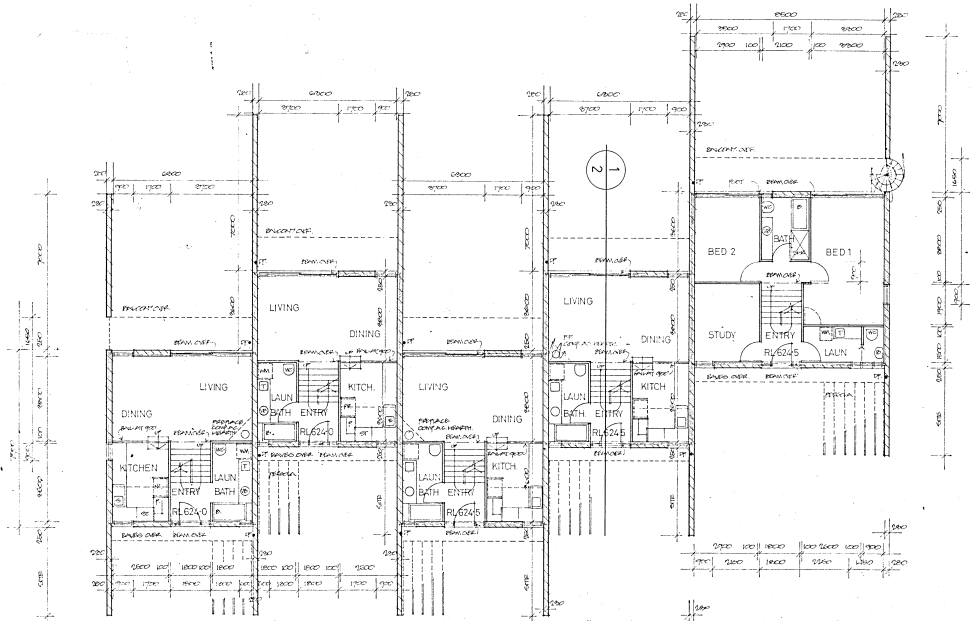
SECTION 1:1 (U2)



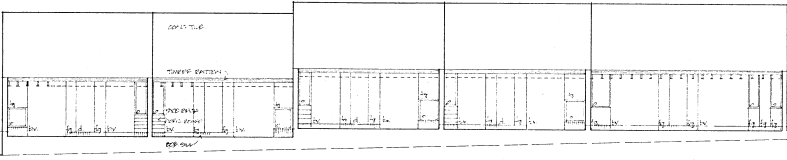
NORTH

UPPER LEVEL

- U2:1
15.5m x 10.5m
- U2:2
15.5m x 10.5m
- U2:3
15.5m x 10.5m
- U2:4
15.5m x 10.5m
- U3:5
15.5m x 10.5m

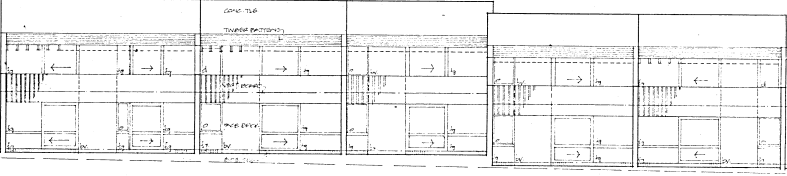


SOUTH



EAST

- U2:1
15.5m x 10.5m
- U2:2
15.5m x 10.5m
- U2:3
15.5m x 10.5m
- U2:4
15.5m x 10.5m
- U3:5
15.5m x 10.5m



WEST

- U3:5
15.5m x 10.5m
- U2:4
15.5m x 10.5m
- U2:3
15.5m x 10.5m
- U2:2
15.5m x 10.5m
- U2:1
15.5m x 10.5m

LOWER LEVEL

- U2:1
15.5m x 10.5m
- U2:2
15.5m x 10.5m
- U2:3
15.5m x 10.5m
- U2:4
15.5m x 10.5m
- U3:5
15.5m x 10.5m

AMENDMENTS

1. REVISED DRAWING
2. REVISED DRAWING
3. REVISED DRAWING
4. REVISED DRAWING
5. REVISED DRAWING
6. REVISED DRAWING
7. REVISED DRAWING
8. REVISED DRAWING
9. REVISED DRAWING
10. REVISED DRAWING
11. REVISED DRAWING
12. REVISED DRAWING
13. REVISED DRAWING
14. REVISED DRAWING
15. REVISED DRAWING
16. REVISED DRAWING
17. REVISED DRAWING
18. REVISED DRAWING
19. REVISED DRAWING
20. REVISED DRAWING

ARCHITECTS
MICHAEL DYBART + ASSOC PTY LTD
15 GORDON STREET SIOUY GOULBURN NSW 2570
PHONE 234 2897

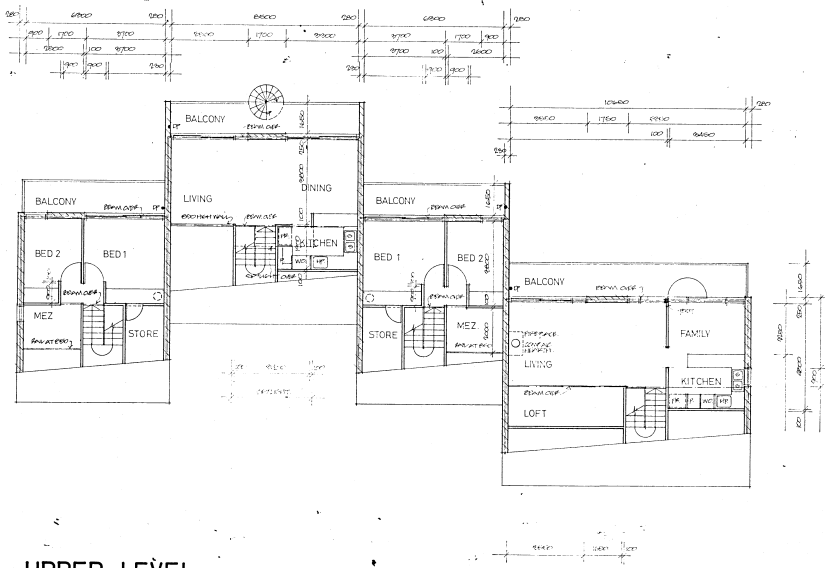
STRUCTURAL CIVIL & HYDRAULIC ENGINEERS
TAYLOR THOMSON + WHITTING
148 HAMILTON STREET ST LEONARDS NSW 2238
PHONE 439 7258

ELECTRICAL ENGINEER
BARRY WEBB + ASSOCIATES
13 ALEXANDRA STREET HAYTERS HILL NSW 2170
PHONE 952 2794

URAMBI
COOPERATIVE COMMUNITY
ADVANCEMENT SOCIETY LTD
100/101 SPURWAY ROAD HAYTERS HILL NSW 2170

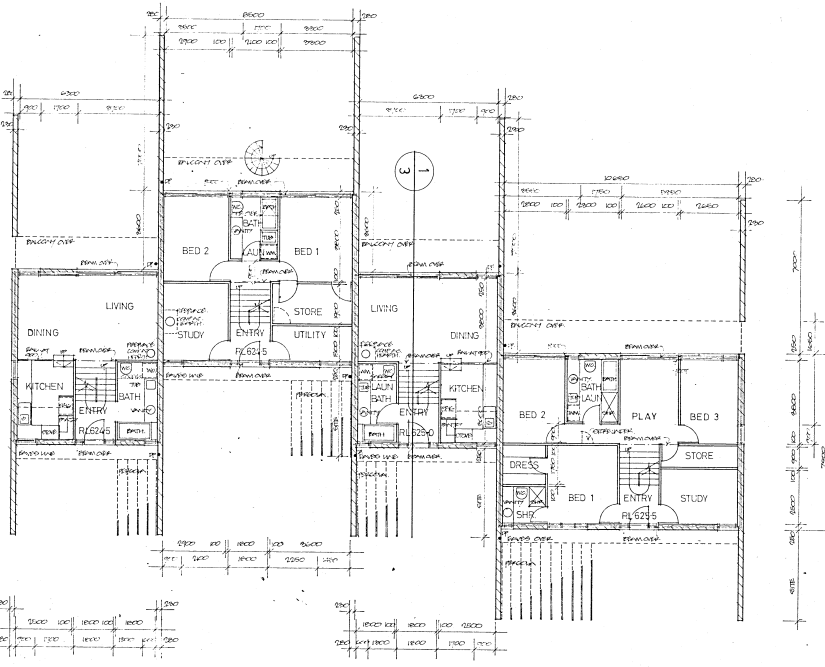
GROUP A
PLANS
ELEVATIONS
SECTIONS

SCALE 1:100
DATE 15/04/2010
PROJECT 2009



UPPER LEVEL

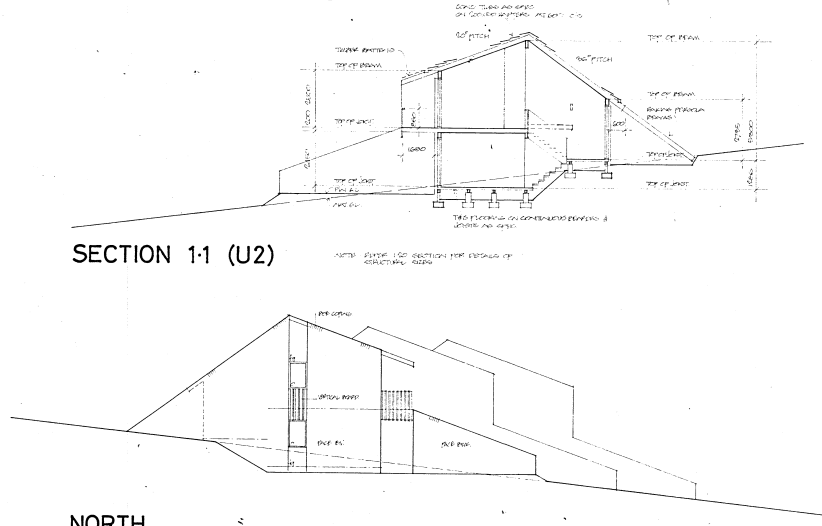
U2-6 U3-7 U2-8 U4-9



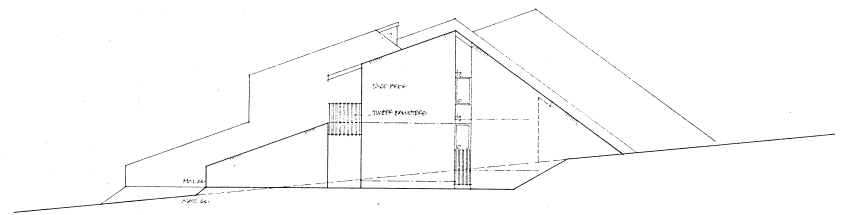
LOWER LEVEL

U2-6 U3-7 U2-8 U4-9

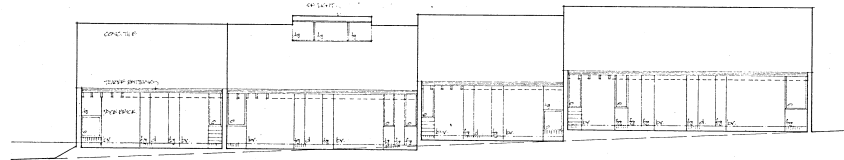
SECTION 1:1 (U2)



NORTH

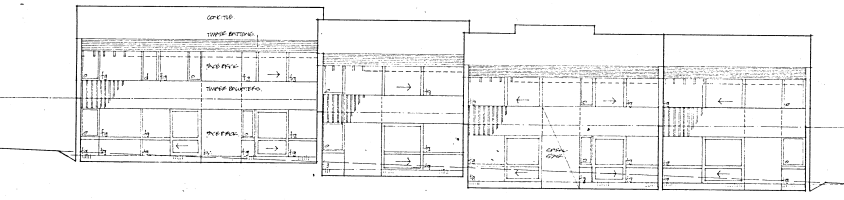


SOUTH



EAST

U2-6 U3-7 U2-8 U4-9



WEST

U4-9 U2-8 U3-7 U2-6

- AMENDMENTS
- 1. REVISIONS
 - 2. REVISIONS
 - 3. REVISIONS
 - 4. REVISIONS
 - 5. REVISIONS
 - 6. REVISIONS
 - 7. REVISIONS
 - 8. REVISIONS
 - 9. REVISIONS
 - 10. REVISIONS
 - 11. REVISIONS
 - 12. REVISIONS
 - 13. REVISIONS
 - 14. REVISIONS
 - 15. REVISIONS
 - 16. REVISIONS
 - 17. REVISIONS
 - 18. REVISIONS
 - 19. REVISIONS
 - 20. REVISIONS
 - 21. REVISIONS
 - 22. REVISIONS
 - 23. REVISIONS
 - 24. REVISIONS
 - 25. REVISIONS
 - 26. REVISIONS
 - 27. REVISIONS
 - 28. REVISIONS
 - 29. REVISIONS
 - 30. REVISIONS
 - 31. REVISIONS
 - 32. REVISIONS
 - 33. REVISIONS
 - 34. REVISIONS
 - 35. REVISIONS
 - 36. REVISIONS
 - 37. REVISIONS
 - 38. REVISIONS
 - 39. REVISIONS
 - 40. REVISIONS
 - 41. REVISIONS
 - 42. REVISIONS
 - 43. REVISIONS
 - 44. REVISIONS
 - 45. REVISIONS
 - 46. REVISIONS
 - 47. REVISIONS
 - 48. REVISIONS
 - 49. REVISIONS
 - 50. REVISIONS
 - 51. REVISIONS
 - 52. REVISIONS
 - 53. REVISIONS
 - 54. REVISIONS
 - 55. REVISIONS
 - 56. REVISIONS
 - 57. REVISIONS
 - 58. REVISIONS
 - 59. REVISIONS
 - 60. REVISIONS
 - 61. REVISIONS
 - 62. REVISIONS
 - 63. REVISIONS
 - 64. REVISIONS
 - 65. REVISIONS
 - 66. REVISIONS
 - 67. REVISIONS
 - 68. REVISIONS
 - 69. REVISIONS
 - 70. REVISIONS
 - 71. REVISIONS
 - 72. REVISIONS
 - 73. REVISIONS
 - 74. REVISIONS
 - 75. REVISIONS
 - 76. REVISIONS
 - 77. REVISIONS
 - 78. REVISIONS
 - 79. REVISIONS
 - 80. REVISIONS
 - 81. REVISIONS
 - 82. REVISIONS
 - 83. REVISIONS
 - 84. REVISIONS
 - 85. REVISIONS
 - 86. REVISIONS
 - 87. REVISIONS
 - 88. REVISIONS
 - 89. REVISIONS
 - 90. REVISIONS
 - 91. REVISIONS
 - 92. REVISIONS
 - 93. REVISIONS
 - 94. REVISIONS
 - 95. REVISIONS
 - 96. REVISIONS
 - 97. REVISIONS
 - 98. REVISIONS
 - 99. REVISIONS
 - 100. REVISIONS

ARCHITECTS
MICHAEL DYART + ASSOC PTY LTD
103 GEORGE STREET SYDNEY NSW 2000
PHONE 241 2977

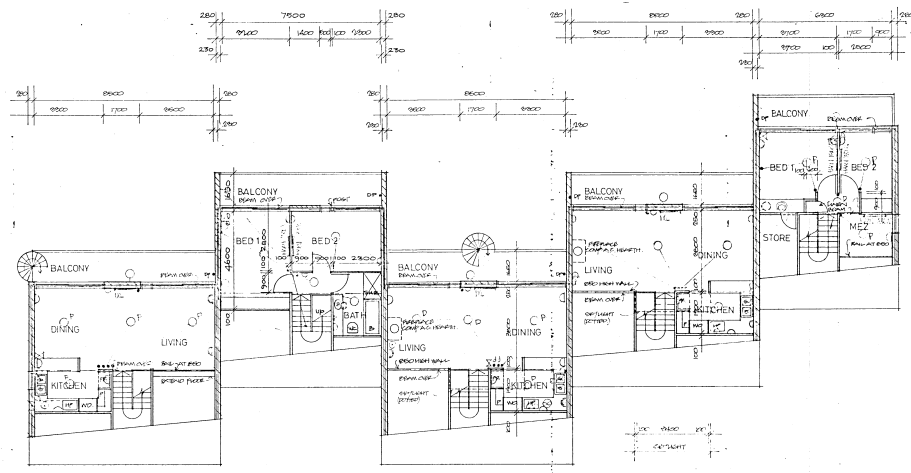
STRUCTURAL ENG + HYDRAULIC ENGINEER
TAYLOR THOMSON + WHITTING
48 GRANVILLE STREET SYDNEY NSW 2000
PHONE 439 7388

ELECTRICAL ENGINEER
BARRY WEBB + ASSOCIATES
31 ALEXANDRIA STREET HURSTVILLE NSW 2110
PHONE 808 2738

URAMMI
COOPERATIVE COMMUNITY
ADVANCEMENT SOCIETY LTD
ORDER CIRCUIT KANBAH (SEC 102) A.C.T.

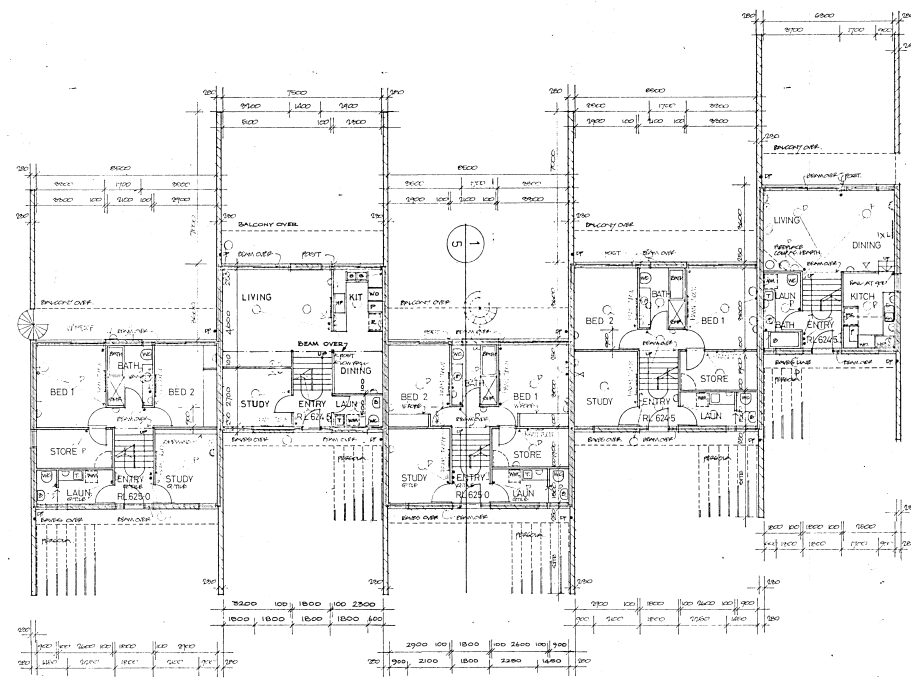
GROUP B
PLANS
ELEVATIONS

SCALE 1:50
DATE 11/11/11
DRAWN BY



UPPER LEVEL

U3-10 U3b-11 U3-12 U3-13 U2-14



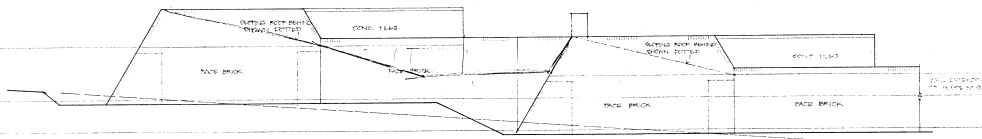
LOWER LEVEL

U3-10 U3b-11 U3-12 U3-13 U2-14

- AMENDMENTS**
- 0301 ITEM
 - 0302 0303 0304 0305 0306 0307 0308 0309 0310 0311 0312 0313 0314 0315 0316 0317 0318 0319 0320 0321 0322 0323 0324 0325 0326 0327 0328 0329 0330 0331 0332 0333 0334 0335 0336 0337 0338 0339 0340 0341 0342 0343 0344 0345 0346 0347 0348 0349 0350 0351 0352 0353 0354 0355 0356 0357 0358 0359 0360 0361 0362 0363 0364 0365 0366 0367 0368 0369 0370 0371 0372 0373 0374 0375 0376 0377 0378 0379 0380 0381 0382 0383 0384 0385 0386 0387 0388 0389 0390 0391 0392 0393 0394 0395 0396 0397 0398 0399 0400
- ELECTRIC SYMBOLS**
- CEILING LIGHT POINT
 - P-PRECEPT ○ DOWNLIGHT R-RECESSED
 - HALL LIGHT POINT
 - WALL LIGHT POINT WITH INTEGRAL SWITCH
 - SINGLE SWITCH
 - SINGLE PULL SWITCH
 - 2 WAY SWITCH
 - DIMMER SWITCH
 - ARCHITECTURAL LIGHT & INTEGRAL SWITCH
 - D SINGLE POWER POINT
 - D DOUBLE POWER POINT
 - D SINGLE POWER POINT-BELOW WORKBENCH
 - TV OUTLET
 - TELEPHONE OUTLET
 - EXTRACT FAN THRU WALL
 - EXTRACT FAN THRU CEILING
 - ELECTRIC CLOCK
 - ELECTRIC BELL
- A House 10: Downlight omitted from Bed 2. Also omitted from Bed 2.
 House 11: Double GPO added in Dining.
 House 14: Downlight outside Entry. Non-symmetrical GPO for refrigerator added & one on top of worktop in Kitchen added. 6.87.

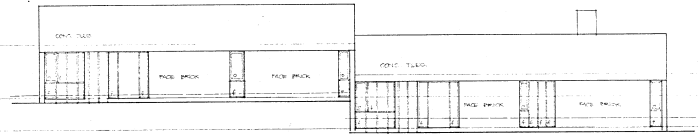


AMENDMENTS
 0101 11/10
 0102 11/10
 0103 11/10
 0104 11/10
 0105 11/10
 0106 11/10
 0107 11/10
 0108 11/10
 0109 11/10
 0110 11/10



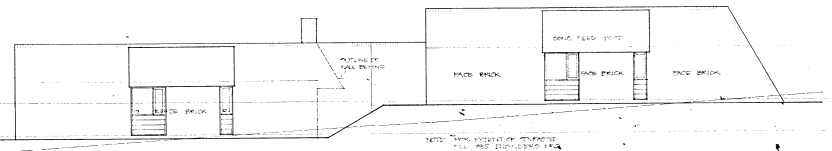
NORTH
UC3-15

UC3-16



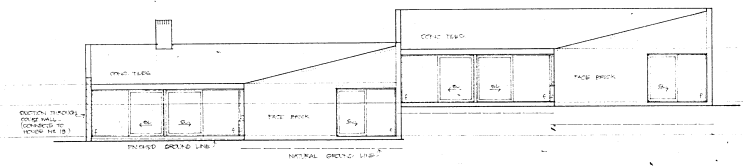
EAST
UC3-15

UC3-16



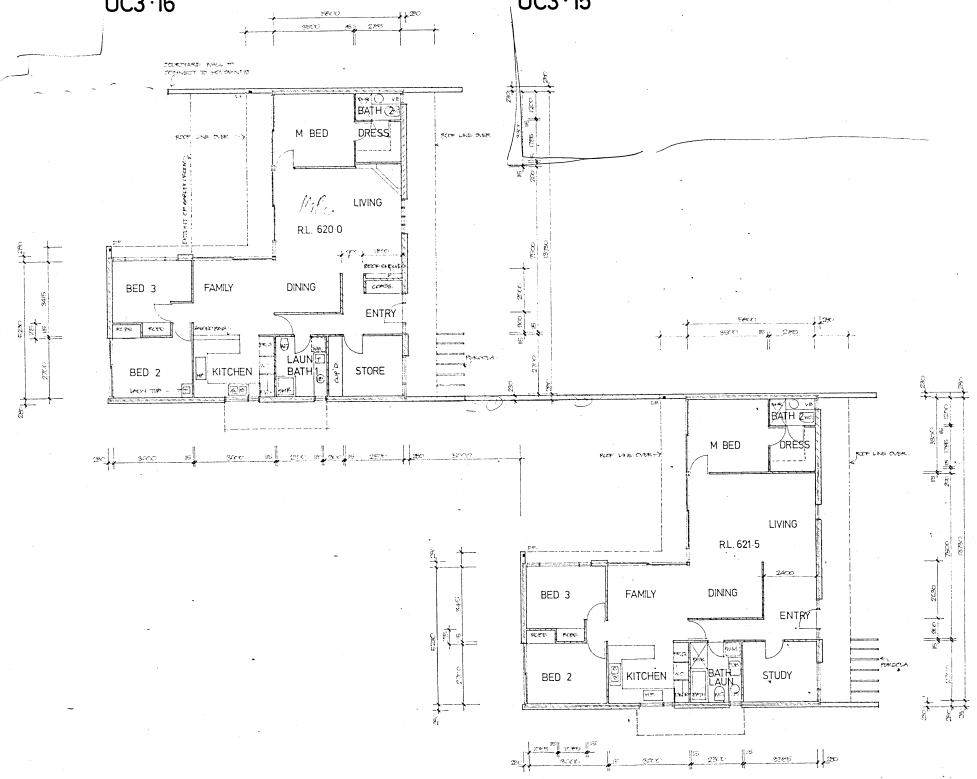
SOUTH
UC3-16

UC3-15



WEST
UC3-16

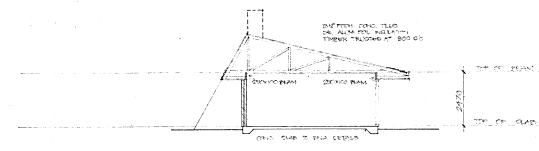
UC3-15



FLOOR PLANS

UC3-16

UC3-15



SECTION
(Through Living)

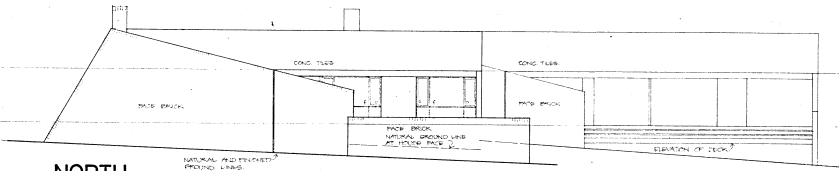
ARCHITECTS
 MICHAEL DYSART + ASSOC. P.C.
 10 GEORGE STREET SUITE 602 DOWNTOWN
 PHOENIX, AZ 85004
 PHONE 480-227-1100

STRUCTURAL, ELEC. + MECHANICAL ENGINEERS
 TAYLOR THOMSON + WHITTING
 48 CHANDLER STREET ST. LOUIS MO. 63105
 PHONE 438-7218

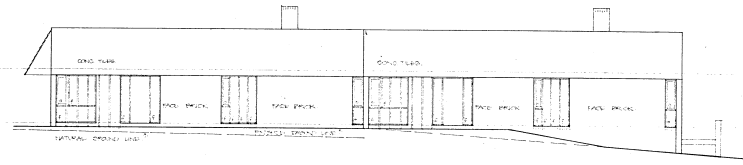
ELECTRICAL ENGINEER
 BARRY WEED + ASSOCIATES
 31 ALEXANDRA STREET HUNTERS HILL NSW
 PHONE 853-2703

URAMPI
 COOPERATIVE COMMUNITY
 ADVANCEMENT SOCIETY LTD.
 CRISP'S COURT HANOVER CO. VA. 22960
 GROUP - 10-B
 PLANS
 ELEVATIONS

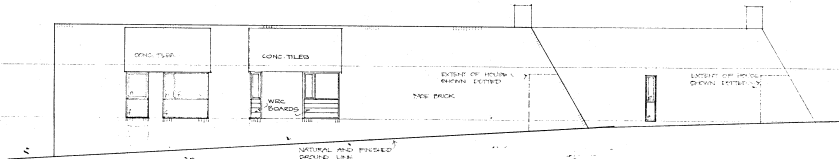
SCALE
 1/8" = 1'-0"
 1/4" = 1'-0"
 1/2" = 1'-0"



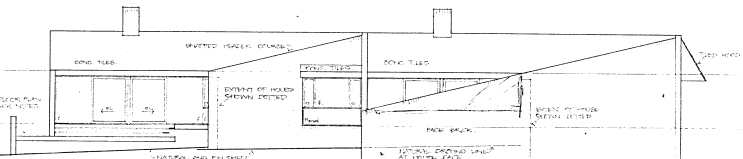
NORTH



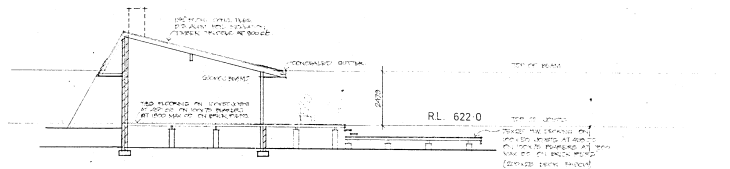
EAST



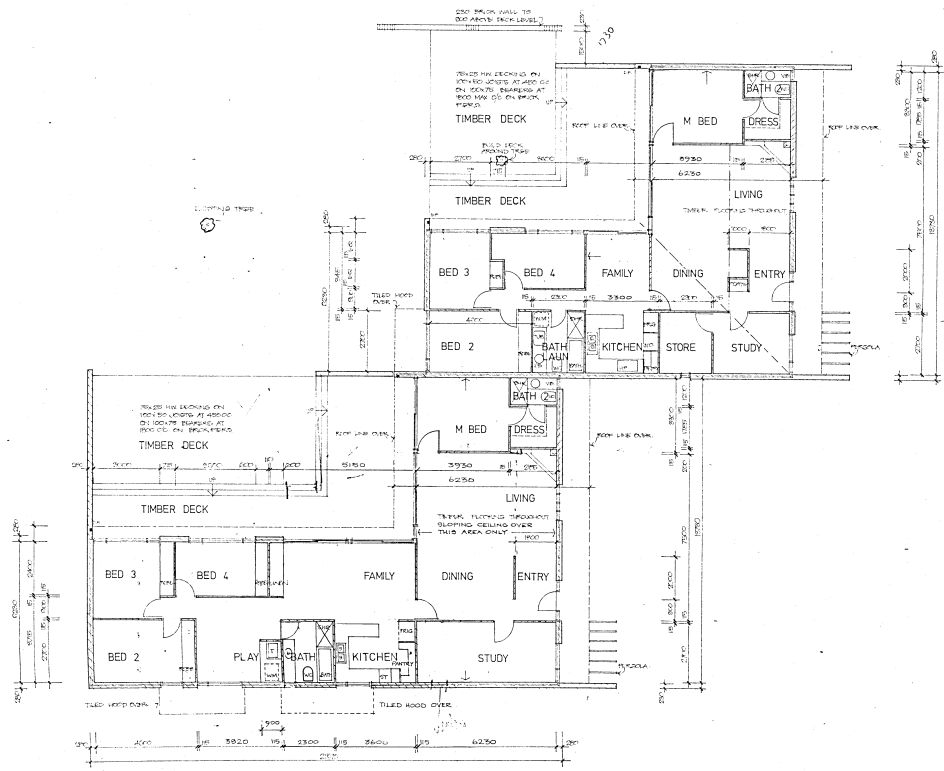
SOUTH



WEST



SECTION



FLOOR PLANS

UCSP-17

UC5-18

AT 11/10/2015
 PROJECT NO. 17/15
 CLIENT: UCSP-17
 DRAWING NO. UCSP-17-01
 DATE: 11/10/2015
 SCALE: 1/4" = 1'-0"

STRUCTURAL ENGINEER
 MICHAEL DYSART - ASSOC PTY LTD
 105 GEORGE STREET SYDNEY NSW 2000
 PHONE 241 2197

STRUCTURAL CONSULTING ENGINEER
 TAYLOR THOMSON + WHITTING
 48 CHANDLER STREET ST LEONARDS NSW
 PHONE 433 7028

ELECTRICAL ENGINEER
 BARRY WEBB + ASSOCIATES
 20 ALEXANDER STREET HAYMARKET NSW
 PHONE 822 2723

URAMM
 COOPERATIVE COMMUNITY
 ADVANCEMENT SOCIETY LTD
 CRICHER CIRCUIT HAYMAN NSW 1511 AUST

GROUP-D-17-0
 PLANS
 ELEVATIONS

SCALE: 1/4" = 1'-0"
 SIZE: 11" x 17"
 DATE: 11/10/2015

The plans for houses 19-21 are missing

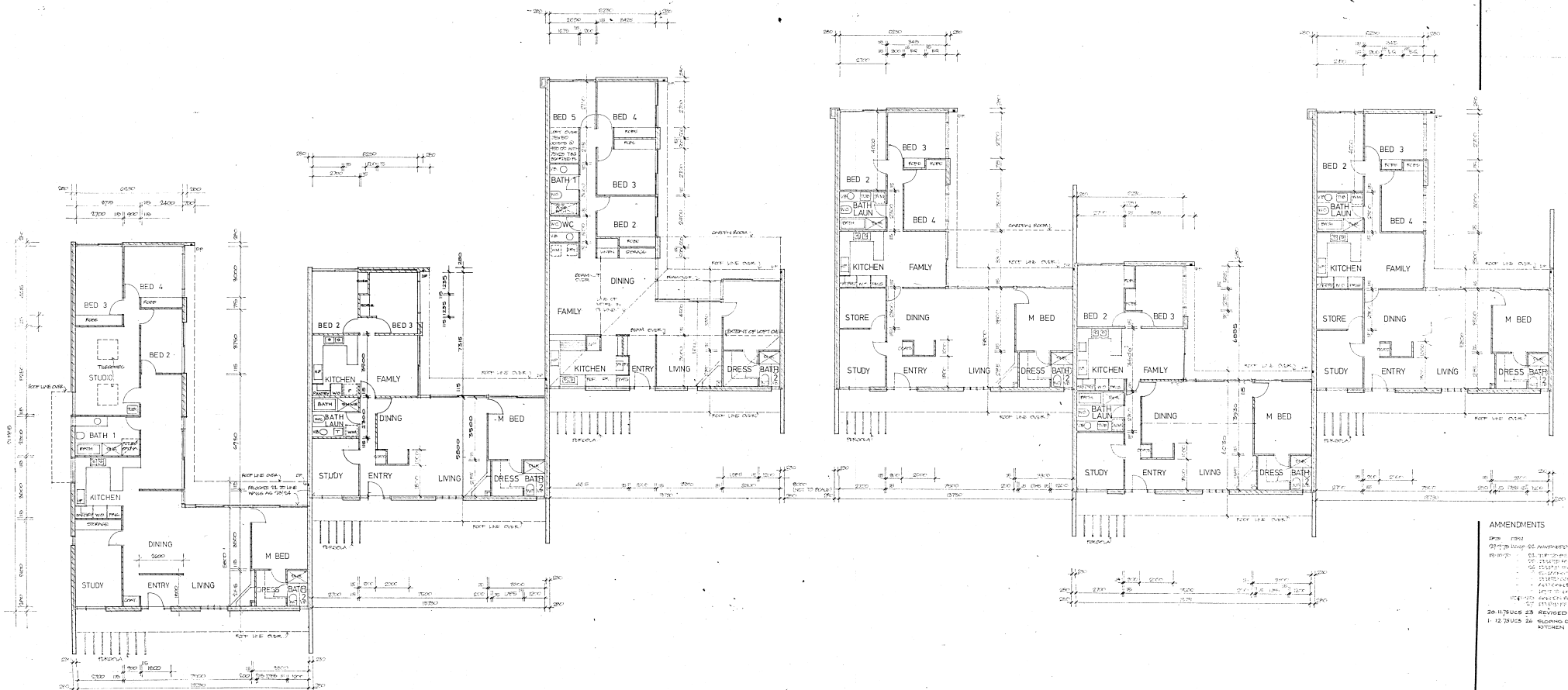
ARCHITECTS
 MICHAEL DYSART + ASSOC PTY LTD
 15 GEORGE STREET SYDNEY NSW 2000
 PHONE 241 2597

STRUCTURAL ENGR - HERALD ENGINEER
 TAYLOR THOMSON + WHITE LTD
 48 CHANCERY STREET ST LEONARDS NSW
 PHONE 439 7288

ELECTRICAL ENGINEER
 BARRY WEBB + ASSOCIATES
 31 ALEXANDRA STREET HUNTERS HILL NSW
 PHONE 855 2703

URAMBI
 COOPERATIVE COMMUNITY
 ADVANCEMENT SOCIETY LTD
 BROOKER CREDIT RAMSAY (SEC 133) ACT

**GROUP F
 PLANS**



FLOOR PLANS

UCSP-22

UC 3-23

UCSP-24

UC5-25

UC3-26

UC5-27

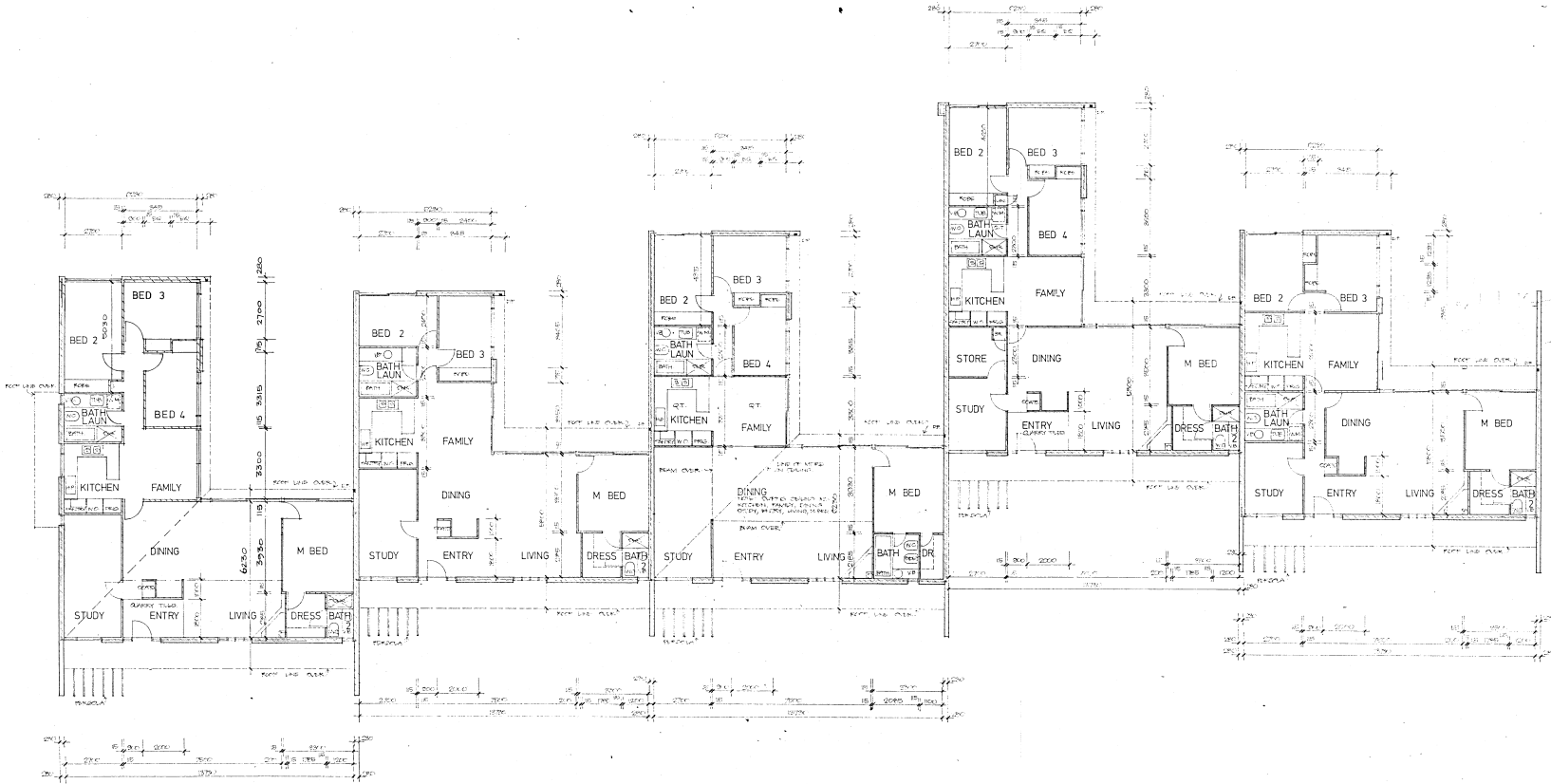
AMENDMENTS

DATE	DESCRIPTION
01/12/05	REVISED TO URS
02/01/06	REVISED TO URS
03/02/06	REVISED TO URS
04/03/06	REVISED TO URS
05/04/06	REVISED TO URS
06/05/06	REVISED TO URS
07/06/06	REVISED TO URS
08/07/06	REVISED TO URS
09/08/06	REVISED TO URS
10/09/06	REVISED TO URS
11/10/06	REVISED TO URS
12/11/06	REVISED TO URS

**GROUP F
 PLANS**

SCALE
 DATE
 DRAWN

AMENDMENTS
 PLAN 1200
 PLAN BY: MICHAEL DYSART ASSOC. PVT. LTD.
 PREPARED BY: MICHAEL DYSART ASSOC. PVT. LTD.
 REVISION: 12/10/94
 112/28/28 - SLEEPING CRILING ADDED
 PLAN REVISED TO SUIT



FLOOR PLANS

UC5-28

UC6-29

UCSP-30

UC5-31

UC3-32

ARCHITECTS
 MICHAEL DYSART ASSOC. PVT. LTD.
 105 GEORGE STREET SUITE 1000 TORONTO, ONT.
 PHONE: 961-2577

STRUCTURAL CIVIL & MECHANICAL ENGINEERS
 TAYLOR THOMSON & WATSON
 48 GARDNER STREET, TORONTO, ONT. M5G 1K7
 PHONE: 462-7222

ELECTRICAL ENGINEER
 BARRY WEBB ASSOCIATES
 30 ALEXANDER STREET, MISSISSAUGA, ONT. L4W 1A2
 PHONE: 885-2722

UCSP-30
 COOPERATIVE COMMUNITY
 ADVANCEMENT SOCIETY LTD.
 30 GERRARD STREET EAST, TORONTO, ONT. M5E 1H7
 GROUP - G
 PLANS

SCALE: 1/8" = 1'-0"
 DATE: 12/10/94

ARCHITECTS
MICHAEL DYSART - ASSOC PTY LTD
90 GORDON STREET, BUNDEESVILLE, QUEENSLAND
PHONE 241 257

STRUCTURAL CIVIL & HYDRAULIC ENGINEERS
TAYLOR THOMSON & WHITTING
48 CHANNON STREET, ST LEONARDS, QUEENSLAND
PHONE 439 7288

ELECTRICAL ENGINEER
BARRY WEBB & ASSOCIATES
3 ALEXANDER STREET, HORTONVALE, QUEENSLAND
PHONE 456 2778

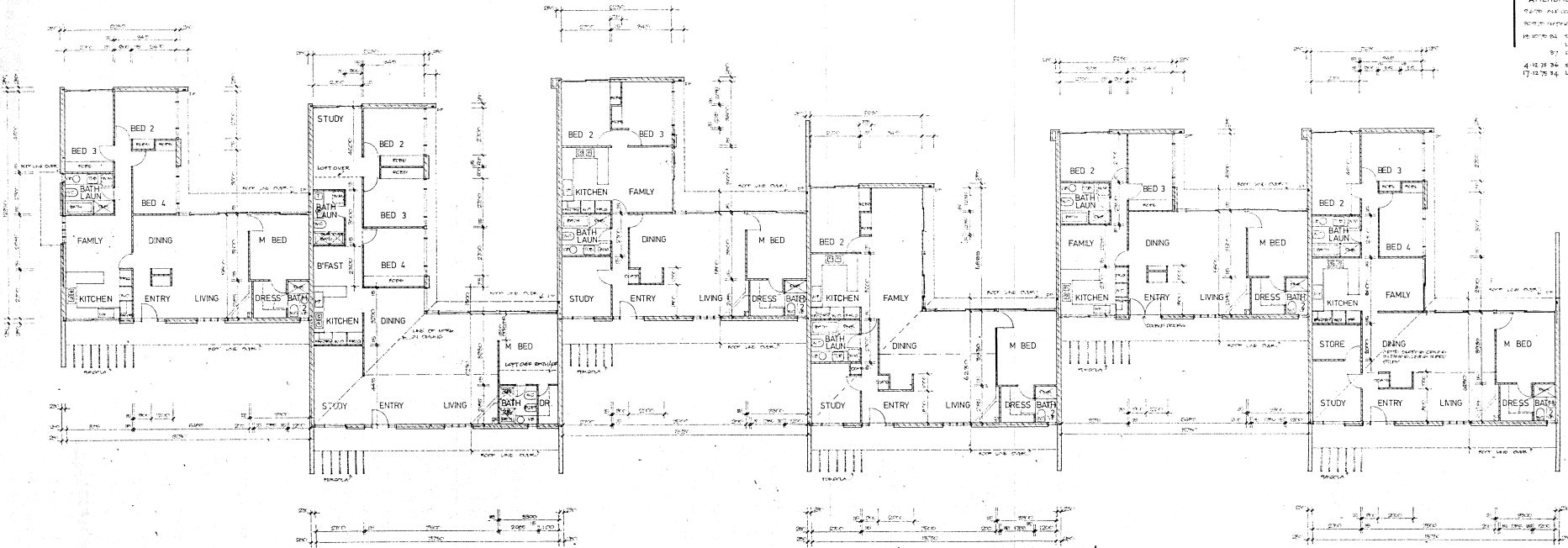
URAMBI

COOPERATIVE COMMUNITY
ADVANCEMENT SOCIETY LTD
C/O BUNDEESVILLE, QUEENSLAND

GROUP - H PLANS

AMENDMENTS

1. AS PER PLAN UC2-35, 36, 37 & 38
2. AS PER PLAN UC2-35, 36, 37 & 38
3. AS PER PLAN UC2-35, 36, 37 & 38
4. AS PER PLAN UC2-35, 36, 37 & 38



FLOOR PLANS

UC2-33

UCSP-34

UC3-35

UC3-36

UC1-37

UC5-38

GROUP - H PLANS