

FLOOR PLANS

UC1-39

UC1-40

UC3-41

UC5-42

UC8-43

AMENDMENTS

01/27/78	02	ADD	REVISION TO PLAN	10000
02/07/78	03	ADD	REVISION TO PLAN	10000
02/07/78	04	ADD	REVISION TO PLAN	10000
02/07/78	05	ADD	REVISION TO PLAN	10000
02/07/78	06	ADD	REVISION TO PLAN	10000
02/07/78	07	ADD	REVISION TO PLAN	10000
02/07/78	08	ADD	REVISION TO PLAN	10000
02/07/78	09	ADD	REVISION TO PLAN	10000
02/07/78	10	ADD	REVISION TO PLAN	10000
02/07/78	11	ADD	REVISION TO PLAN	10000
02/07/78	12	ADD	REVISION TO PLAN	10000
02/07/78	13	ADD	REVISION TO PLAN	10000
02/07/78	14	ADD	REVISION TO PLAN	10000
02/07/78	15	ADD	REVISION TO PLAN	10000
02/07/78	16	ADD	REVISION TO PLAN	10000
02/07/78	17	ADD	REVISION TO PLAN	10000
02/07/78	18	ADD	REVISION TO PLAN	10000
02/07/78	19	ADD	REVISION TO PLAN	10000
02/07/78	20	ADD	REVISION TO PLAN	10000
02/07/78	21	ADD	REVISION TO PLAN	10000
02/07/78	22	ADD	REVISION TO PLAN	10000
02/07/78	23	ADD	REVISION TO PLAN	10000
02/07/78	24	ADD	REVISION TO PLAN	10000
02/07/78	25	ADD	REVISION TO PLAN	10000
02/07/78	26	ADD	REVISION TO PLAN	10000
02/07/78	27	ADD	REVISION TO PLAN	10000
02/07/78	28	ADD	REVISION TO PLAN	10000
02/07/78	29	ADD	REVISION TO PLAN	10000
02/07/78	30	ADD	REVISION TO PLAN	10000
02/07/78	31	ADD	REVISION TO PLAN	10000
02/07/78	32	ADD	REVISION TO PLAN	10000
02/07/78	33	ADD	REVISION TO PLAN	10000
02/07/78	34	ADD	REVISION TO PLAN	10000
02/07/78	35	ADD	REVISION TO PLAN	10000
02/07/78	36	ADD	REVISION TO PLAN	10000
02/07/78	37	ADD	REVISION TO PLAN	10000
02/07/78	38	ADD	REVISION TO PLAN	10000
02/07/78	39	ADD	REVISION TO PLAN	10000
02/07/78	40	ADD	REVISION TO PLAN	10000
02/07/78	41	ADD	REVISION TO PLAN	10000
02/07/78	42	ADD	REVISION TO PLAN	10000
02/07/78	43	ADD	REVISION TO PLAN	10000
02/07/78	44	ADD	REVISION TO PLAN	10000
02/07/78	45	ADD	REVISION TO PLAN	10000
02/07/78	46	ADD	REVISION TO PLAN	10000
02/07/78	47	ADD	REVISION TO PLAN	10000
02/07/78	48	ADD	REVISION TO PLAN	10000
02/07/78	49	ADD	REVISION TO PLAN	10000
02/07/78	50	ADD	REVISION TO PLAN	10000

House 43, Purinton, 12/4/78
 Electrical Heating (HWH) added in loc 12-4-78

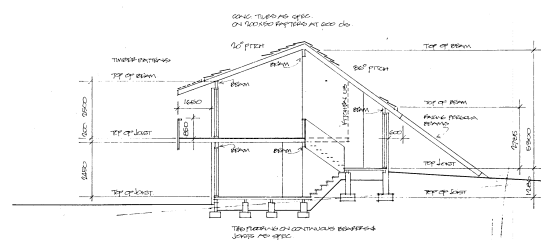
ELECTRIC

APPROVED
 MICHAEL DWIGANT - ASBUC RIV LTD
 12 KINGS STREET, BARNLEY, WYKES, WYKES
 PHONE 421 217

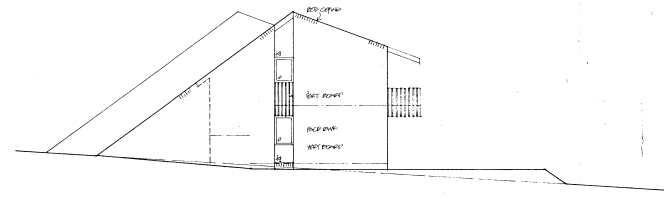
STRUCTURAL CIVIL & MECHANICAL ENGINEER
 TAYLOR THOMPSON & WHITTING
 48 BRUNNEN STREET, STURROVE, WYKES, WYKES
 PHONE 421 215

MECHANICAL ENGINEER
 BARRY WOOD & ASSOCIATES
 11 ALEXANDRA STREET, HARROLD, WYKES, WYKES
 PHONE 421 211

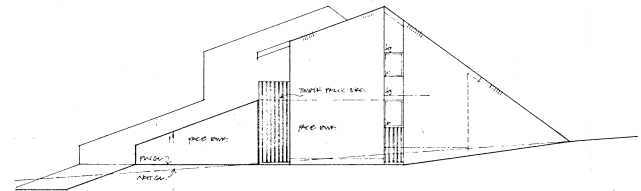
COOPERATIVE COMMUNITY
 ADVANCEMENT SOCIETY LTD
 GROUP J
 PLANS



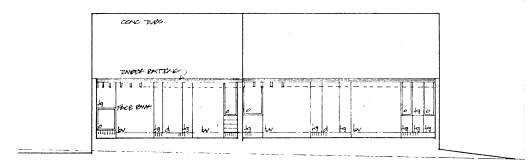
SECTION 1:1 (U3)



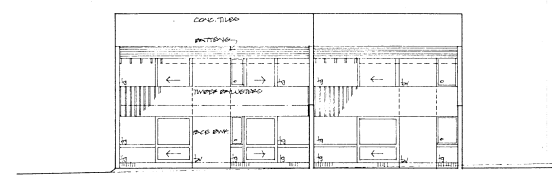
EAST



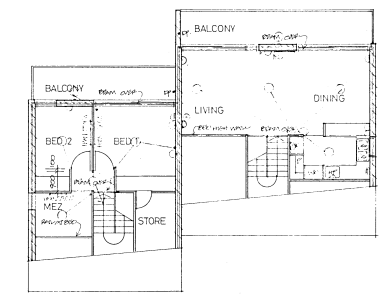
WEST



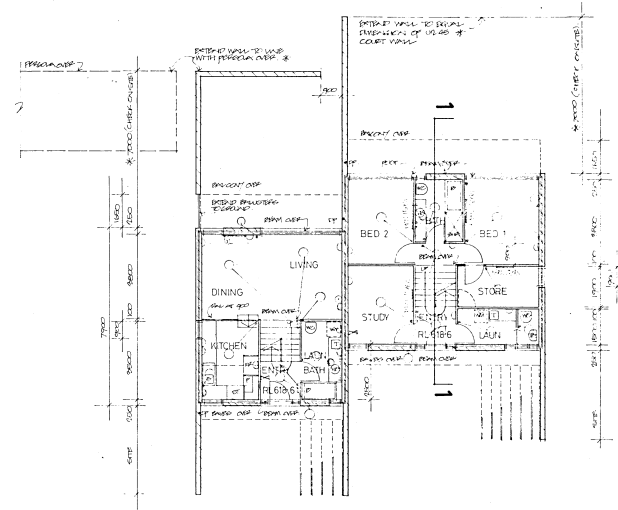
SOUTH
U2-45 U3-44



NORTH
U3-44 U2-45



UPPER LEVEL
U2-45 U3-44



LOWER LEVEL
U2-45 U3-44

AMENDMENTS
DATE 17/04 1984
BY S. J. WEBB (PRACTISE)
DRAWN BY S. J. WEBB (PRACTISE)
SCALE 1:100

- ELECTRIC SYMBOLS**
- CEILING LIGHT POINT
 - (with P) PENDANT ○ (with D) DOWNLIGHT ○ (with R) RECESSED
 - (with W) WALL LIGHT POINT
 - (with I) WALL LIGHT POINT WITH INTEGRAL SWITCH
 - (with S) SINGLE SWITCH
 - (with PS) SINGLE PULL SWITCH
 - (with 2W) 2 WAY SWITCH
 - (with D) DIMMER SWITCH
 - (with A) ARCHITECTURAL LIGHT & INTEGRAL SWITCH
 - D SINGLE POWER POINT
 - D (with 2) DOUBLE POWER POINT
 - (with B) SINGLE POWER POINT-BELLY WORKSHEET
 - (with T) TV CUPLET
 - (with TS) TELEPHONE CUPLET
 - (with F) EXTRACT FAN THRU WALL
 - (with C) EXTRACT FAN THRU CEILING
 - (with CL) ELECTRIC CLOCK
 - (with B) ELECTRIC BELL

House 44: Single GPO to Living Room added. Double GPO to Kitchen added.
House 45: 2 way switch to Bed 1 ceiling light added.

ELECTRIC



ARCHITECTS
MICHAEL DUNN + ASSOC PTY LTD
45 GLEN STREET ST LEONARDS NSW 2232
PHONE 241 2157

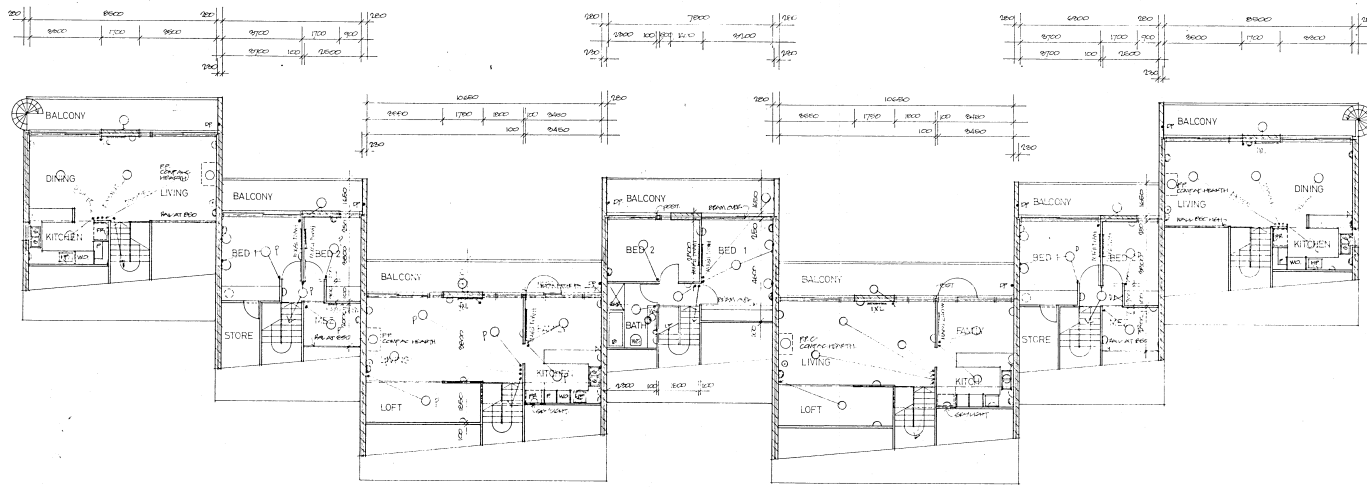
STRUCTURAL CIVIL + MECHANICAL ENGINEERS
TAYLOR THOMSON + WHITING
41 CHURCH STREET ST LEONARDS NSW
PHONE 439 7212

ELECTRICAL ENGINEER
BARRY WEBB + ASSOCIATES
38 ALEXANDER STREET MOUNTS RILL NSW 2115
PHONE 836 9724

URAMBI
COOPERATIVE COMMUNITY
ADVANCEMENT SOCIETY LTD.
CROZIER CIRCUIT KAMBAH (SEC 16) ACT

U3-44 U2-45

PLANS
ELEVATIONS
SECTION!



UPPER LEVEL

U3-52
UPPER FLOOR

U2-51

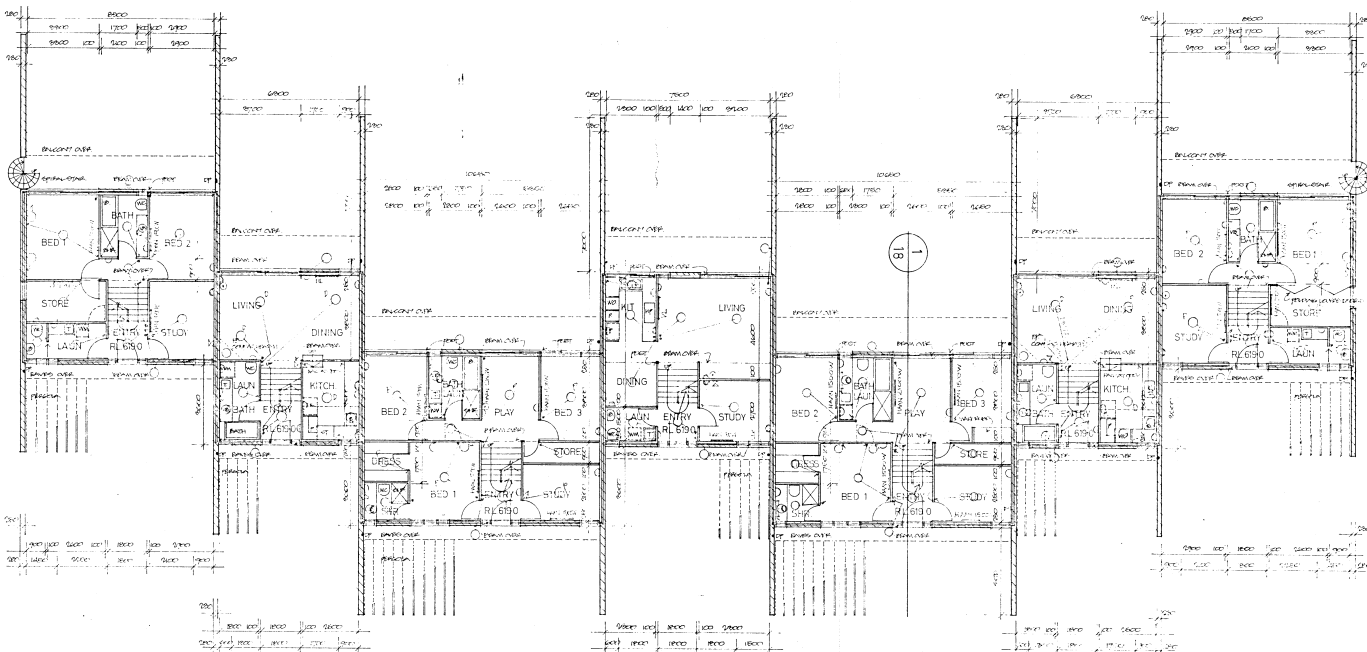
U4-50

U3b-49
UPPER FLOOR

U4-48
UPPER AND LOWER LEVEL

U2-47
UPPER AND LOWER LEVEL

U3-46



LOWER LEVEL

U3-52

U2-51

U4-50

U3b-49

U4-48

U2-47

U3-46

AMENDMENTS

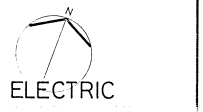
0101 FIRM
0201 2-BEDROOM UNIT
0301 1-BEDROOM UNIT
0401 2-BEDROOM UNIT
0501 2-BEDROOM UNIT
0601 2-BEDROOM UNIT
0701 2-BEDROOM UNIT
0801 2-BEDROOM UNIT
0901 2-BEDROOM UNIT
1001 2-BEDROOM UNIT
1101 2-BEDROOM UNIT
1201 2-BEDROOM UNIT
1301 2-BEDROOM UNIT
1401 2-BEDROOM UNIT
1501 2-BEDROOM UNIT
1601 2-BEDROOM UNIT
1701 2-BEDROOM UNIT
1801 2-BEDROOM UNIT
1901 2-BEDROOM UNIT
2001 2-BEDROOM UNIT
2101 2-BEDROOM UNIT
2201 2-BEDROOM UNIT
2301 2-BEDROOM UNIT
2401 2-BEDROOM UNIT
2501 2-BEDROOM UNIT
2601 2-BEDROOM UNIT
2701 2-BEDROOM UNIT
2801 2-BEDROOM UNIT
2901 2-BEDROOM UNIT
3001 2-BEDROOM UNIT
3101 2-BEDROOM UNIT
3201 2-BEDROOM UNIT
3301 2-BEDROOM UNIT
3401 2-BEDROOM UNIT
3501 2-BEDROOM UNIT
3601 2-BEDROOM UNIT
3701 2-BEDROOM UNIT
3801 2-BEDROOM UNIT
3901 2-BEDROOM UNIT
4001 2-BEDROOM UNIT
4101 2-BEDROOM UNIT
4201 2-BEDROOM UNIT
4301 2-BEDROOM UNIT
4401 2-BEDROOM UNIT
4501 2-BEDROOM UNIT
4601 2-BEDROOM UNIT
4701 2-BEDROOM UNIT
4801 2-BEDROOM UNIT
4901 2-BEDROOM UNIT
5001 2-BEDROOM UNIT
5101 2-BEDROOM UNIT
5201 2-BEDROOM UNIT
5301 2-BEDROOM UNIT
5401 2-BEDROOM UNIT
5501 2-BEDROOM UNIT
5601 2-BEDROOM UNIT
5701 2-BEDROOM UNIT
5801 2-BEDROOM UNIT
5901 2-BEDROOM UNIT
6001 2-BEDROOM UNIT
6101 2-BEDROOM UNIT
6201 2-BEDROOM UNIT
6301 2-BEDROOM UNIT
6401 2-BEDROOM UNIT
6501 2-BEDROOM UNIT
6601 2-BEDROOM UNIT
6701 2-BEDROOM UNIT
6801 2-BEDROOM UNIT
6901 2-BEDROOM UNIT
7001 2-BEDROOM UNIT
7101 2-BEDROOM UNIT
7201 2-BEDROOM UNIT
7301 2-BEDROOM UNIT
7401 2-BEDROOM UNIT
7501 2-BEDROOM UNIT
7601 2-BEDROOM UNIT
7701 2-BEDROOM UNIT
7801 2-BEDROOM UNIT
7901 2-BEDROOM UNIT
8001 2-BEDROOM UNIT
8101 2-BEDROOM UNIT
8201 2-BEDROOM UNIT
8301 2-BEDROOM UNIT
8401 2-BEDROOM UNIT
8501 2-BEDROOM UNIT
8601 2-BEDROOM UNIT
8701 2-BEDROOM UNIT
8801 2-BEDROOM UNIT
8901 2-BEDROOM UNIT
9001 2-BEDROOM UNIT
9101 2-BEDROOM UNIT
9201 2-BEDROOM UNIT
9301 2-BEDROOM UNIT
9401 2-BEDROOM UNIT
9501 2-BEDROOM UNIT
9601 2-BEDROOM UNIT
9701 2-BEDROOM UNIT
9801 2-BEDROOM UNIT
9901 2-BEDROOM UNIT
10001 2-BEDROOM UNIT

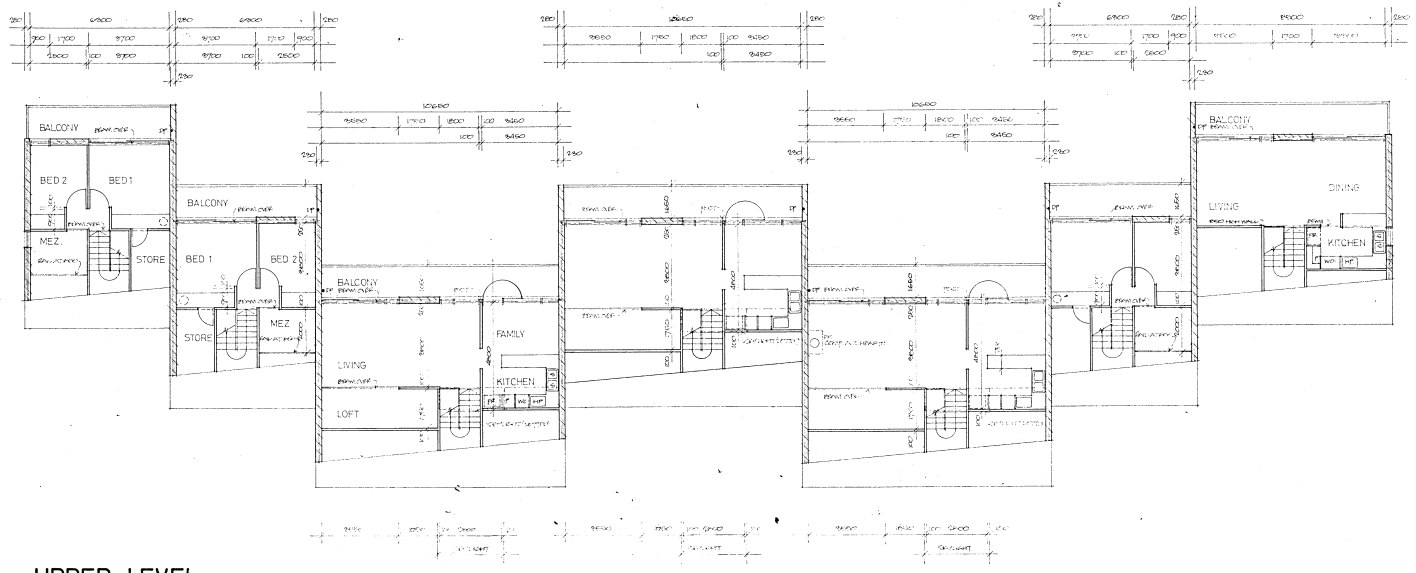
ELECTRIC SYMBOLS

- CEILING LIGHT POINT
- P-PENDANT D-DOWNLIGHT R-RECESSED
- WALL LIGHT POINT
- WALL LIGHT POINT WITH INTEGRAL SWITCH
- SINGLE SWITCH
- SINGLE PULL SWITCH
- 2-WAY SWITCH
- DIMMER SWITCH
- ARCHITECTURAL LIGHT & INTEGRAL SWITCH
- SINGLE POWER POINT
- DOUBLE POWER POINT
- SINGLE POWER POINT-BEDM WORKBENCH
- TV OUTLET
- TELEPHONE OUTLET
- EXTRACT FAN THRU WALL
- EXTRACT FAN THRU CEILING
- ELECTRIC CLOCK
- ELECTRIC BELL

A House 46: All switches 1200 above floor, all are generally 1500 above floor.
House 47: Downlight nominally in Bedroom, ceiling light in Dining and Mess, ceiling Telephone outlet on Landing.
House 51: Double and in kit in lieu of single, Double also included in Mess.
House 52: 2 way from Entry to Landing added.

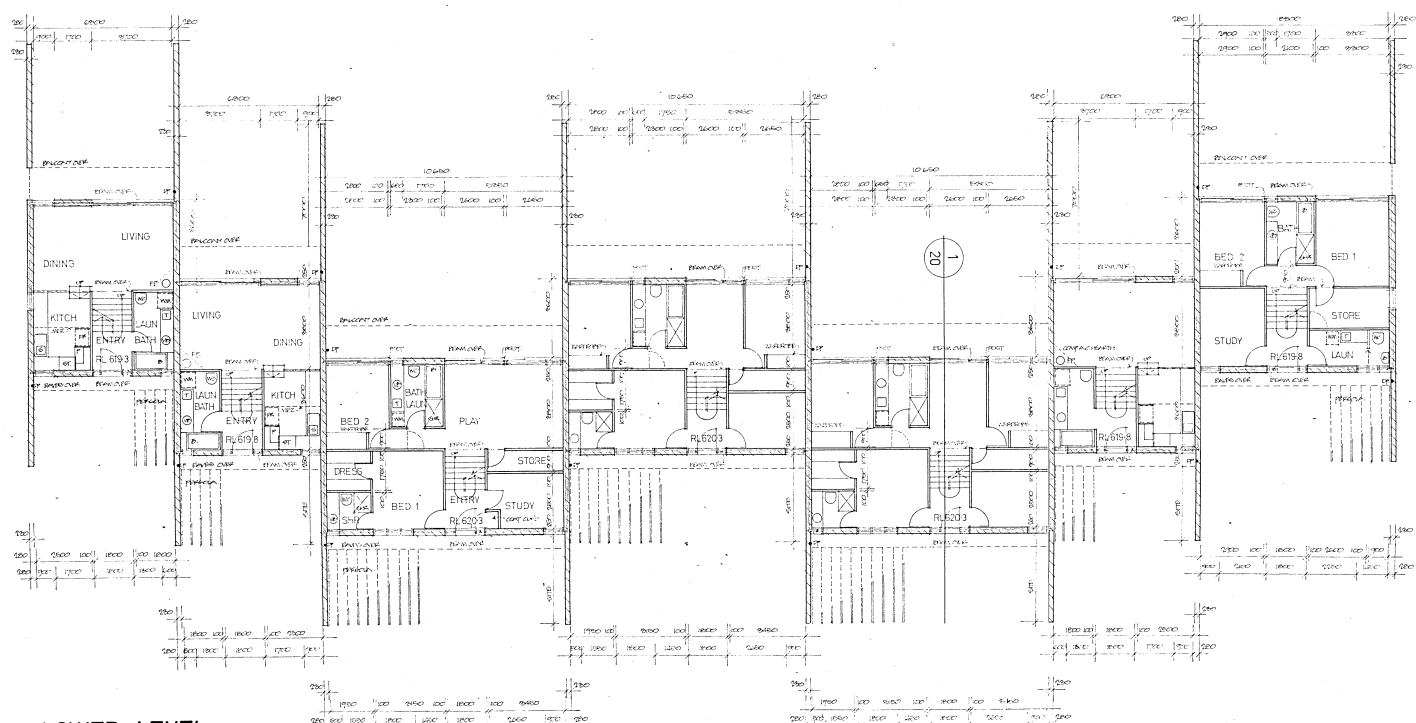
6/8/72





UPPER LEVEL

U2-59 U2-58 U4-57 U4-56 U4-55 U2-54 U3-53



LOWER LEVEL

U2-59 U2-58 U4-57 U4-56 U4-55 U2-54 U3-53

- AMENDMENTS
- 1. REVISED DRAWING
 - 2. REVISED DRAWING
 - 3. REVISED DRAWING
 - 4. REVISED DRAWING
 - 5. REVISED DRAWING
 - 6. REVISED DRAWING
 - 7. REVISED DRAWING
 - 8. REVISED DRAWING
 - 9. REVISED DRAWING
 - 10. REVISED DRAWING
 - 11. REVISED DRAWING
 - 12. REVISED DRAWING
 - 13. REVISED DRAWING
 - 14. REVISED DRAWING
 - 15. REVISED DRAWING
 - 16. REVISED DRAWING
 - 17. REVISED DRAWING
 - 18. REVISED DRAWING
 - 19. REVISED DRAWING
 - 20. REVISED DRAWING
 - 21. REVISED DRAWING
 - 22. REVISED DRAWING
 - 23. REVISED DRAWING
 - 24. REVISED DRAWING
 - 25. REVISED DRAWING
 - 26. REVISED DRAWING
 - 27. REVISED DRAWING
 - 28. REVISED DRAWING
 - 29. REVISED DRAWING
 - 30. REVISED DRAWING
 - 31. REVISED DRAWING
 - 32. REVISED DRAWING
 - 33. REVISED DRAWING
 - 34. REVISED DRAWING
 - 35. REVISED DRAWING
 - 36. REVISED DRAWING
 - 37. REVISED DRAWING
 - 38. REVISED DRAWING
 - 39. REVISED DRAWING
 - 40. REVISED DRAWING
 - 41. REVISED DRAWING
 - 42. REVISED DRAWING
 - 43. REVISED DRAWING
 - 44. REVISED DRAWING
 - 45. REVISED DRAWING
 - 46. REVISED DRAWING
 - 47. REVISED DRAWING
 - 48. REVISED DRAWING
 - 49. REVISED DRAWING
 - 50. REVISED DRAWING
 - 51. REVISED DRAWING
 - 52. REVISED DRAWING
 - 53. REVISED DRAWING
 - 54. REVISED DRAWING
 - 55. REVISED DRAWING
 - 56. REVISED DRAWING
 - 57. REVISED DRAWING
 - 58. REVISED DRAWING
 - 59. REVISED DRAWING
 - 60. REVISED DRAWING
 - 61. REVISED DRAWING
 - 62. REVISED DRAWING
 - 63. REVISED DRAWING
 - 64. REVISED DRAWING
 - 65. REVISED DRAWING
 - 66. REVISED DRAWING
 - 67. REVISED DRAWING
 - 68. REVISED DRAWING
 - 69. REVISED DRAWING
 - 70. REVISED DRAWING
 - 71. REVISED DRAWING
 - 72. REVISED DRAWING
 - 73. REVISED DRAWING
 - 74. REVISED DRAWING
 - 75. REVISED DRAWING
 - 76. REVISED DRAWING
 - 77. REVISED DRAWING
 - 78. REVISED DRAWING
 - 79. REVISED DRAWING
 - 80. REVISED DRAWING
 - 81. REVISED DRAWING
 - 82. REVISED DRAWING
 - 83. REVISED DRAWING
 - 84. REVISED DRAWING
 - 85. REVISED DRAWING
 - 86. REVISED DRAWING
 - 87. REVISED DRAWING
 - 88. REVISED DRAWING
 - 89. REVISED DRAWING
 - 90. REVISED DRAWING
 - 91. REVISED DRAWING
 - 92. REVISED DRAWING
 - 93. REVISED DRAWING
 - 94. REVISED DRAWING
 - 95. REVISED DRAWING
 - 96. REVISED DRAWING
 - 97. REVISED DRAWING
 - 98. REVISED DRAWING
 - 99. REVISED DRAWING
 - 100. REVISED DRAWING



ARCHITECTS
MICHAEL DYBART + ASSOC PTY LTD
 19 GEORGE STREET SYDNEY NSW 2000
 PHONE 241 2597

STRUCTURAL CIVIL + MECHANICAL ENGINEER
TAYLOR THOMSON + WHITING
 48 CHAMBERS STREET ST LEONARDS 2235
 PHONE 439 7288

ELECTRICAL ENGINEER
BARRY WEBB + ASSOCIATES
 33 ALEXANDRA STREET HUNTERS HILL 2173
 PHONE 853 2333

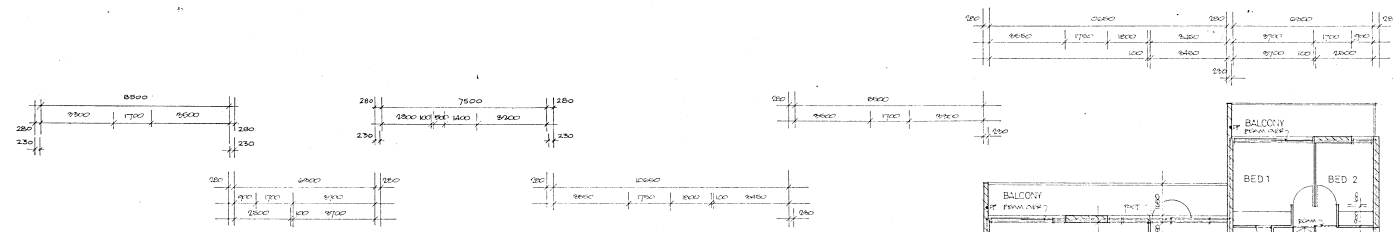
URAMBI
 COOPERATIVE COMMUNITY
 ADVANCEMENT SOCIETY LTD
 622/23 CROFT KATONAH (550 113) ACT

GROUP - L
 PLANS

SCALE 1:100
 DATE 1/1/00
 SHEET 1/1

AMENDMENTS

- 1. TO BE REVISED TO REFLECT THE FOLLOWING:
- 2. TO BE REVISED TO REFLECT THE FOLLOWING:
- 3. TO BE REVISED TO REFLECT THE FOLLOWING:
- 4. TO BE REVISED TO REFLECT THE FOLLOWING:
- 5. TO BE REVISED TO REFLECT THE FOLLOWING:
- 6. TO BE REVISED TO REFLECT THE FOLLOWING:
- 7. TO BE REVISED TO REFLECT THE FOLLOWING:
- 8. TO BE REVISED TO REFLECT THE FOLLOWING:
- 9. TO BE REVISED TO REFLECT THE FOLLOWING:
- 10. TO BE REVISED TO REFLECT THE FOLLOWING:
- 11. TO BE REVISED TO REFLECT THE FOLLOWING:
- 12. TO BE REVISED TO REFLECT THE FOLLOWING:
- 13. TO BE REVISED TO REFLECT THE FOLLOWING:
- 14. TO BE REVISED TO REFLECT THE FOLLOWING:
- 15. TO BE REVISED TO REFLECT THE FOLLOWING:
- 16. TO BE REVISED TO REFLECT THE FOLLOWING:
- 17. TO BE REVISED TO REFLECT THE FOLLOWING:
- 18. TO BE REVISED TO REFLECT THE FOLLOWING:
- 19. TO BE REVISED TO REFLECT THE FOLLOWING:
- 20. TO BE REVISED TO REFLECT THE FOLLOWING:
- 21. TO BE REVISED TO REFLECT THE FOLLOWING:
- 22. TO BE REVISED TO REFLECT THE FOLLOWING:
- 23. TO BE REVISED TO REFLECT THE FOLLOWING:
- 24. TO BE REVISED TO REFLECT THE FOLLOWING:
- 25. TO BE REVISED TO REFLECT THE FOLLOWING:
- 26. TO BE REVISED TO REFLECT THE FOLLOWING:
- 27. TO BE REVISED TO REFLECT THE FOLLOWING:
- 28. TO BE REVISED TO REFLECT THE FOLLOWING:
- 29. TO BE REVISED TO REFLECT THE FOLLOWING:
- 30. TO BE REVISED TO REFLECT THE FOLLOWING:
- 31. TO BE REVISED TO REFLECT THE FOLLOWING:
- 32. TO BE REVISED TO REFLECT THE FOLLOWING:
- 33. TO BE REVISED TO REFLECT THE FOLLOWING:
- 34. TO BE REVISED TO REFLECT THE FOLLOWING:
- 35. TO BE REVISED TO REFLECT THE FOLLOWING:
- 36. TO BE REVISED TO REFLECT THE FOLLOWING:
- 37. TO BE REVISED TO REFLECT THE FOLLOWING:
- 38. TO BE REVISED TO REFLECT THE FOLLOWING:
- 39. TO BE REVISED TO REFLECT THE FOLLOWING:
- 40. TO BE REVISED TO REFLECT THE FOLLOWING:
- 41. TO BE REVISED TO REFLECT THE FOLLOWING:
- 42. TO BE REVISED TO REFLECT THE FOLLOWING:
- 43. TO BE REVISED TO REFLECT THE FOLLOWING:
- 44. TO BE REVISED TO REFLECT THE FOLLOWING:
- 45. TO BE REVISED TO REFLECT THE FOLLOWING:
- 46. TO BE REVISED TO REFLECT THE FOLLOWING:
- 47. TO BE REVISED TO REFLECT THE FOLLOWING:
- 48. TO BE REVISED TO REFLECT THE FOLLOWING:
- 49. TO BE REVISED TO REFLECT THE FOLLOWING:
- 50. TO BE REVISED TO REFLECT THE FOLLOWING:



UPPER LEVEL

U3-72

U2-65

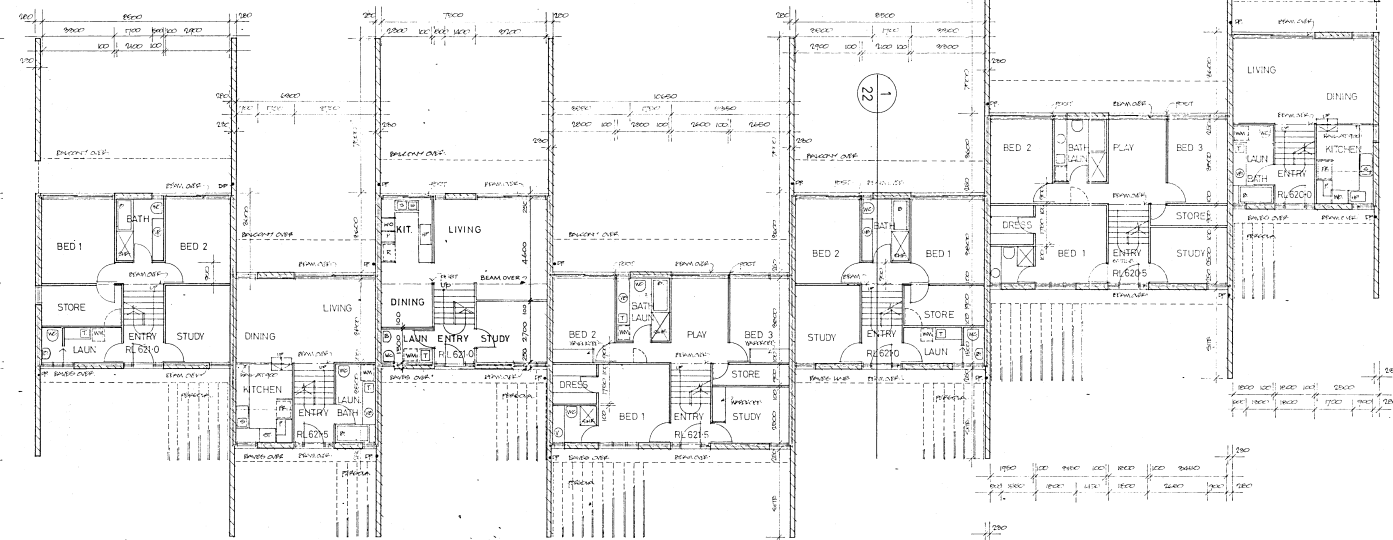
U3B-64

U4-63

U3-62

U4-61

U2-60



LOWER LEVEL

U3-72

U2-65

U3B-64

U4-63

U3-62

U4-61

U2-60



ARCHITECTS
MICHAEL DYKART & ASSOC. PTY. LTD.
39 GEORGE STREET, SYDNEY NSW 2000
PHONE: 241 2197

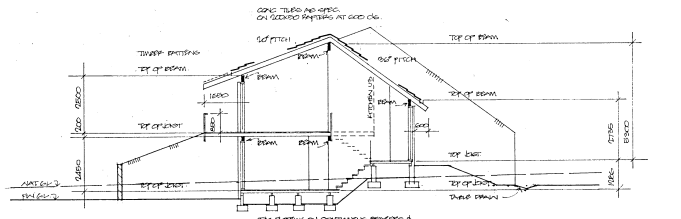
STRUCTURAL CIVIL & MECHANICAL ENGINEER
TAYLOR THOMSON & WHITTING
48 GARDENS STREET, ST LEONARDS NSW
PHONE: 439 2224

ELECTRICAL ENGINEER
BARRY WEBB & ASSOCIATES
39 ALEXANDRA STREET, HUNTERS HILL NSW
PHONE: 889 9782

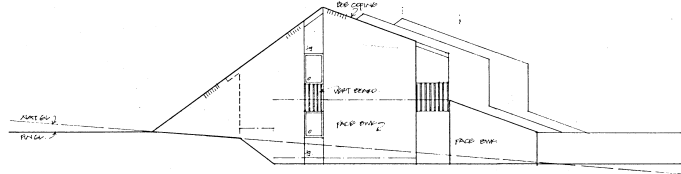
URAMBI
COOPERATIVE COMMUNITY
ADVANCEMENT SOCIETY LTD.
CRISPER COURT, WANDAH NSW 2471

GROUP-N
PLANS

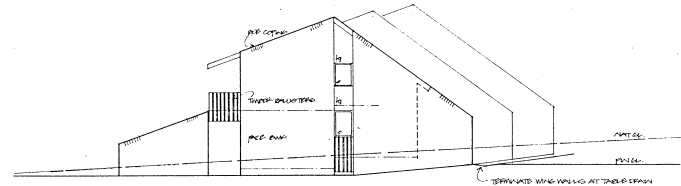
SCALE: 1:50
DATE: 10/10/00
DRAWN: J. SMITH
CHECKED: M. JONES



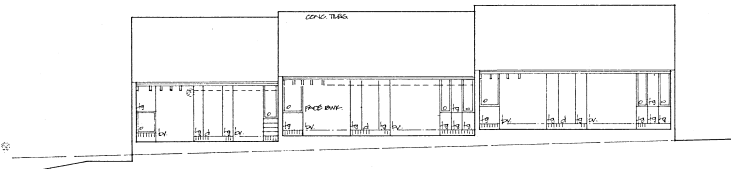
SECTION 1-1 (U3)



EAST



WEST

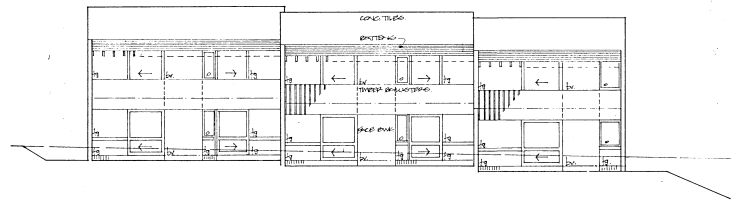


SOUTH

U2-68

U3-67

U3-66

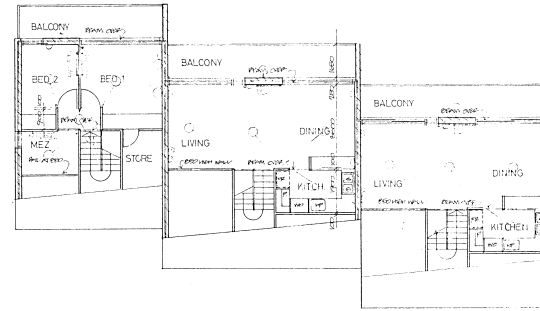
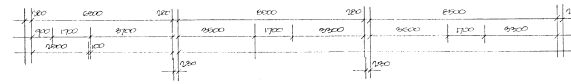


NORTH

U3-66

U3-67

U2-68

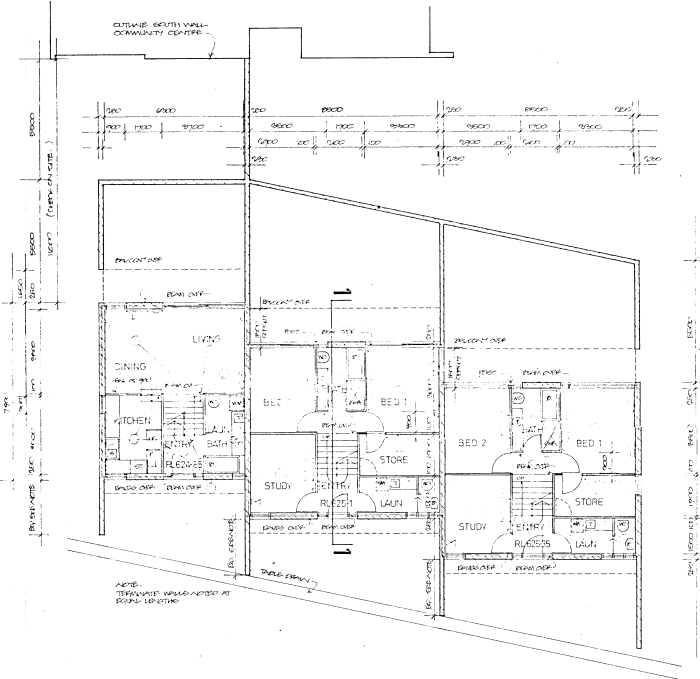


UPPER LEVEL

U2-68

U3-67

U3-66



LOWER LEVEL

U2-68

U3-67

U3-66

AMENDMENTS

DATE: 1984
 BY: J. P. H. & J. P. H. FROM 25/1/84
 REVISION: 20/2/84
 U3-66 REVISION TO U3-67
 U3-67 U3-66
 U3-66 U3-66

ELECTRIC SYMBOLS

- CEILING LIGHT POINT
- P-PENDANT B-DOWNLIGHT R-RECESSED
- WALL LIGHT POINT
- WALL LIGHT POINT WITH INTEGRAL SWITCH
- SINGLE SWITCH
- 2 WAY SWITCH
- DIMMER SWITCH
- ARCHITECTURAL LIGHT & INTEGRAL SWITCH
- SINGLE POWER POINT
- DOUBLE POWER POINT
- SINGLE POWER POINT-BELOW WORKTOP
- TV OUTLET
- TELEPHONE OUTLET
- EXTRACT FAN THRU WALL
- EXTRACT FAN THRU CEILING
- ELECTRIC CLOCK
- ELECTRIC BELL



ELECTRIC

DESIGNED BY: J. P. H. & J. P. H. FROM 25/1/84
 DRAWN BY: J. P. H. FROM 25/1/84
 FILE NO: 25/1/84

STRUCTURAL CONSULTANTS: J. P. H. & J. P. H. FROM 25/1/84
 TAYLOR, THOMSON & WHITEHEAD
 48 BRISTOL STREET, LEEDS LS2 9JL
 PHONE: 433 7233

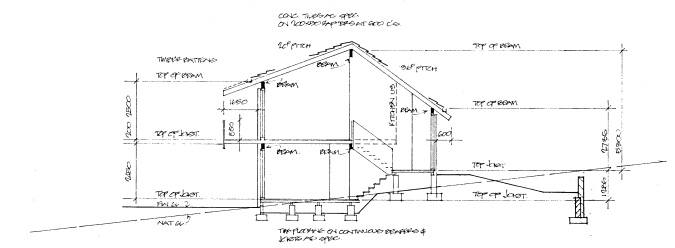
ELECTRICAL CONSULTANTS: J. P. H. & J. P. H. FROM 25/1/84
 DARTY, WEBB & ASSOCIATES
 23 ALBERT STREET, LEEDS LS2 9JL
 PHONE: 433 7233

COOPERATIVE CREDIT SOCIETY LTD
 ADVANCEMENT SOCIETY LTD
 CR22168 (ENQUIRY: 0113) 241172

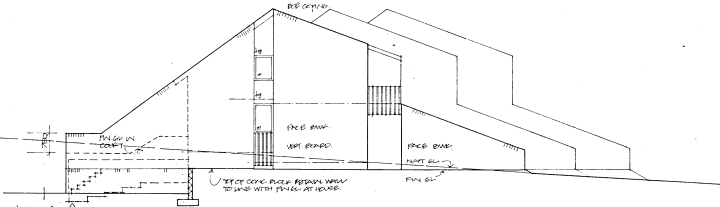
U3-66,67 U3-68

PLANS
 ELEVATIONS
 SECTION

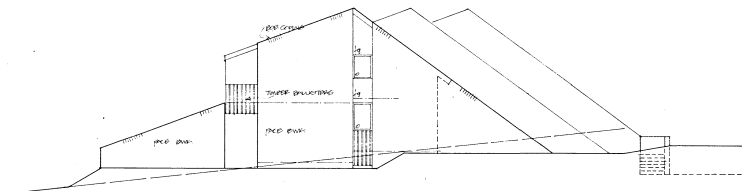
SECTION 1:1 (U3)



NORTH

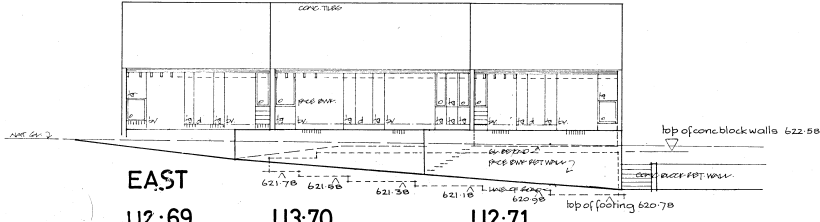


SOUTH



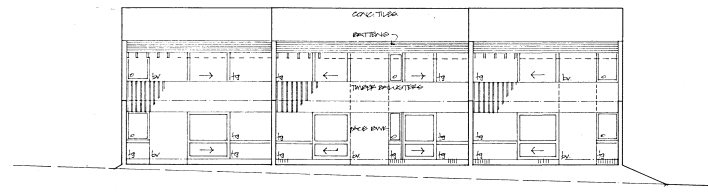
EAST

U2-69 U3-70 U2-71



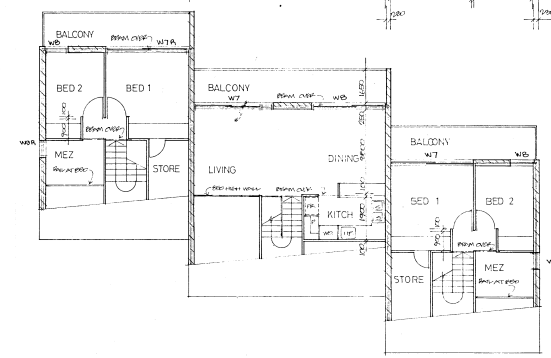
WEST

U2-71 U3-70 U2-69



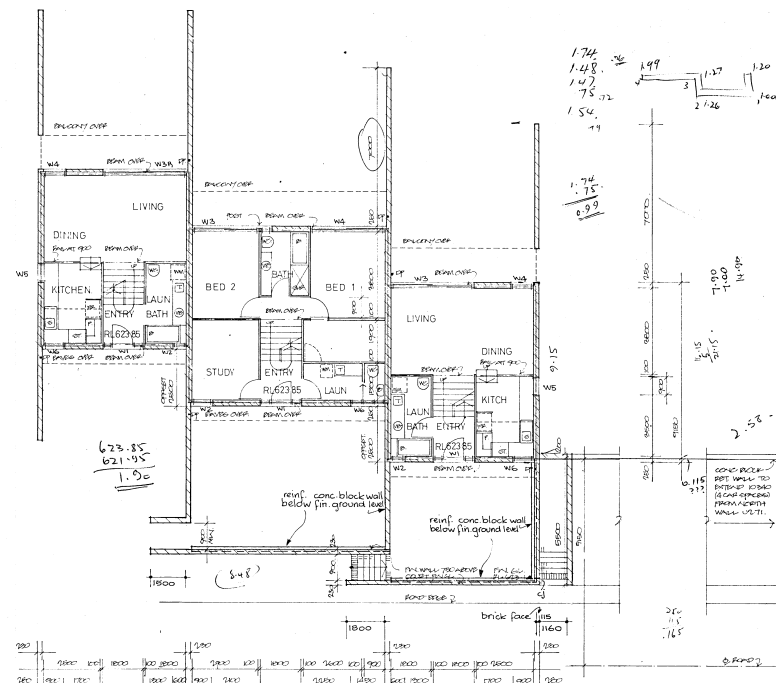
UPPER LEVEL

U2-69 U3-70 U2-71



LOWER LEVEL

U2-69 U3-70 U2-71



AMENDMENTS
 1. 10/27/03 DWG 662-0000
 2. 11/10/03 DWG 662-0000
 3. 11/10/03 DWG 662-0000
 4. 11/10/03 DWG 662-0000
 5. 11/10/03 DWG 662-0000
 6. 11/10/03 DWG 662-0000
 7. 11/10/03 DWG 662-0000
 8. Levels of roadway corrected & concrete block walls erected brick walls to courtyards amended. 7.4.76



ARCHITECTS
 MICHAEL DYSART & ASSOC. PTY LTD
 18 GEORGE STREET SYDNEY NSW SYDNEY 2000
 PHONE 241 2157

STRUCTURAL CIVIL & MECHANICAL ENGINEER
 TAYLOR THOMSON & WHITTING
 48 CHANCOS STREET ST LEONARDS 2066
 PHONE 439 7266

ELECTRICAL ENGINEER
 BARRY WEBB & ASSOCIATES
 33 ALEXANDRA STREET HUNTERS HILL 2110
 PHONE 696 2736

URAMBI
 COOPERATIVE COMMUNITY
 ADVANCEMENT SOCIETY LTD.
 CROZIER CIRCUIT KAMBH (SEC 169) ACT

U2-69,71 U3-70
 PLANS
 ELEVATIONS
 SECTION

SCALE 1:50
 DATE 02-11-03
 DRAWN - CPM
 DRG NO 24 JB